

# ST-REL3-SG 24/21 - Relay connectors



2822011

<https://www.phoenixcontact.com/us/products/2822011>

Please be informed that the data shown in this PDF document is generated from our online catalog. Please find the complete data in the user documentation. Our general terms of use for downloads are valid.



Relay connector, equipped Siemens KAMMRELAIS®, contacts (Ag): medium loads, 1 changeover contact, input voltage 24 V DC, with LED display, pluggable into basic terminal blocks

## Commercial data

Item number	2822011
Packing unit	1 pc
Minimum order quantity	1 pc
Note	Made to order (non-returnable)
Sales key	C460
Product key	CK6122
Catalog page	Page 81 (IF-2002)
GTIN	4017918077167
Weight per piece (including packing)	48.64 g
Weight per piece (excluding packing)	46.27 g
Customs tariff number	85364190
Country of origin	DE

# ST-REL3-SG 24/21 - Relay connectors



2822011

<https://www.phoenixcontact.com/us/products/2822011>

## Technical data

### Product properties

Product type	Relay Module
Operating mode	100% operating factor
Mechanical service life	approx. $10^7$ cycles (approx. $10^6$ with AC relay)

### Electrical properties

Maximum power dissipation for nominal condition	0.77 W
Test voltage (Winding/contact)	1 kV AC (50 Hz, 1 min., winding/contact)

### Input data

#### Coil side

Nominal input voltage $U_N$	24 V DC
Input voltage range	19.2 V DC ... 26.4 V DC (20 °C)
Drive and function	monostable
Typical input current at $U_N$	32 mA
Typical response time	8 ms (with DC)
Typical release time	15 ms (with DC)
Protective circuit	Damping diode, polarity protection; Damping diode, polarity protection diode
Operating voltage display	yes

### Output data

#### Switching

Contact switching type	Single contact, 1 changeover contact
Type of switch contact	Single contact
Contact material	Ag, gold-flashed
Maximum switching voltage	250 V AC/DC
Limiting continuous current	5 A
Maximum inrush current	5 A
Interrupting rating (ohmic load) max.	120 W (at 24 V DC) 60 W (at 48 V DC) 50 W (at 60 V DC) 50 W (at 110 V DC) 70 W (at 220 V DC) 500 VA (for 250 V AC)

### Dimensions

Width	20.8 mm
Height	33 mm
Depth	66.5 mm

# ST-REL3-SG 24/21 - Relay connectors



2822011

<https://www.phoenixcontact.com/us/products/2822011>

## Material specifications

Color	transparent
-------	-------------

## Environmental and real-life conditions

### Ambient conditions

Ambient temperature (operation)	-20 °C ... 60 °C
Ambient temperature (storage/transport)	-20 °C ... 70 °C

## Standards and regulations

Standards/regulations	DIN VDE 0110b, Gr. C for 250 V DC
	DIN VDE 0160 (in relevant parts)

## Mounting

Mounting type	Plug-in mounting
---------------	------------------

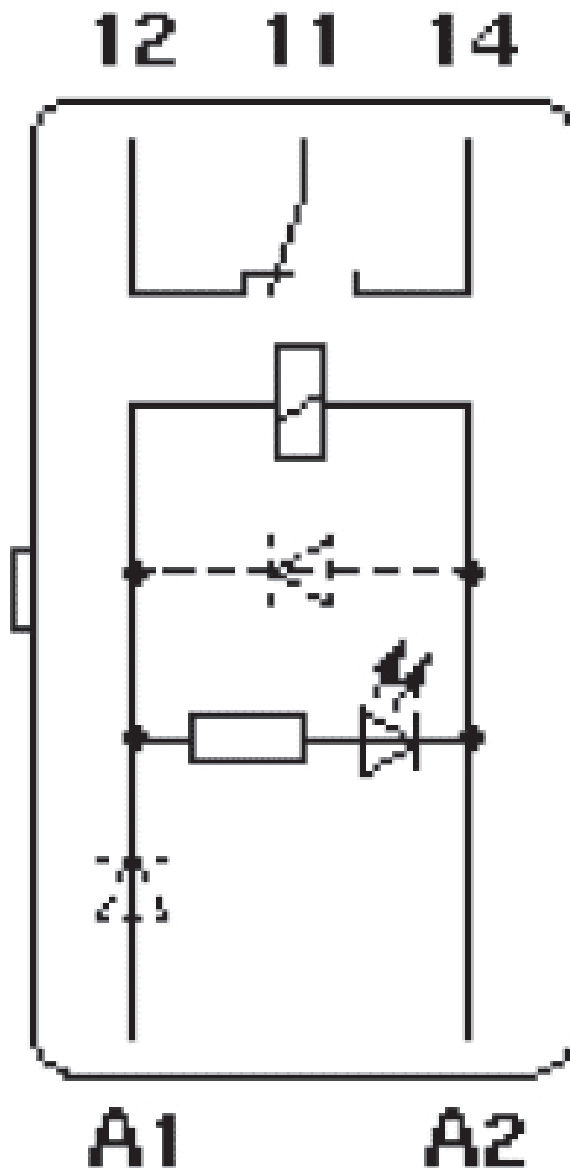
# ST-REL3-SG 24/21 - Relay connectors

2822011

<https://www.phoenixcontact.com/us/products/2822011>

## Drawings

Circuit diagram



# ST-REL3-SG 24/21 - Relay connectors



2822011

<https://www.phoenixcontact.com/us/products/2822011>

## Classifications

### ECLASS

ECLASS-11.0

27371601

### UNSPSC

UNSPSC 21.0

39122334

# ST-REL3-SG 24/21 - Relay connectors



2822011

<https://www.phoenixcontact.com/us/products/2822011>

## Environmental product compliance

China RoHS	Environmentally Friendly Use Period = 50 years For information on hazardous substances, refer to the manufacturer's declaration available under "Downloads"
------------	--

# ST-REL3-SG 24/21 - Relay connectors

2822011

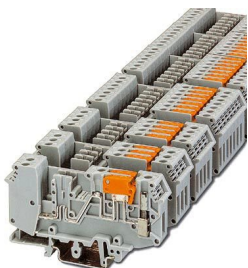
<https://www.phoenixcontact.com/us/products/2822011>

## Accessories

### URELG 3-PMTK - Basic terminal block

2820709

<https://www.phoenixcontact.com/us/products/2820709>



Basic terminal blocks with test pick-off on both sides and knife disconnection for NS 32 and NS 35/7,5 DIN rail, with end cover, for ST-REL..., ST-OV..., and ST-OE... plugs, 3-pos.

---

### UDK-RELG 3 - Basic terminal block

2777043

<https://www.phoenixcontact.com/us/products/2777043>



Basic terminal blocks with test pick-off on both sides and double connections with the same potential for NS 32 and NS 35/7,5 DIN rail, with end cover, for ST-REL..., ST-OV..., and ST-OE... plugs, 3-pos.

# ST-REL3-SG 24/21 - Relay connectors



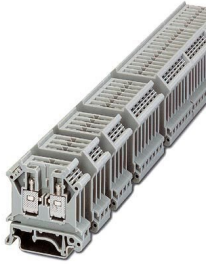
2822011

<https://www.phoenixcontact.com/us/products/2822011>

## URELG 3 - Basic terminal block

2820136

<https://www.phoenixcontact.com/us/products/2820136>



Basic termination blocks with screw connection for NS 32 and NS 35/7.5 DIN rail, with end cover, for ST-REL..., ST-OV... and ST-OE... plugs, 3-pos.

---

Phoenix Contact 2023 © - all rights reserved

<https://www.phoenixcontact.com>

Phoenix Contact USA  
586 Fulling Mill Road  
Middletown, PA 17057, United States  
(+717) 944-1300  
[info@phoenixcon.com](mailto:info@phoenixcon.com)